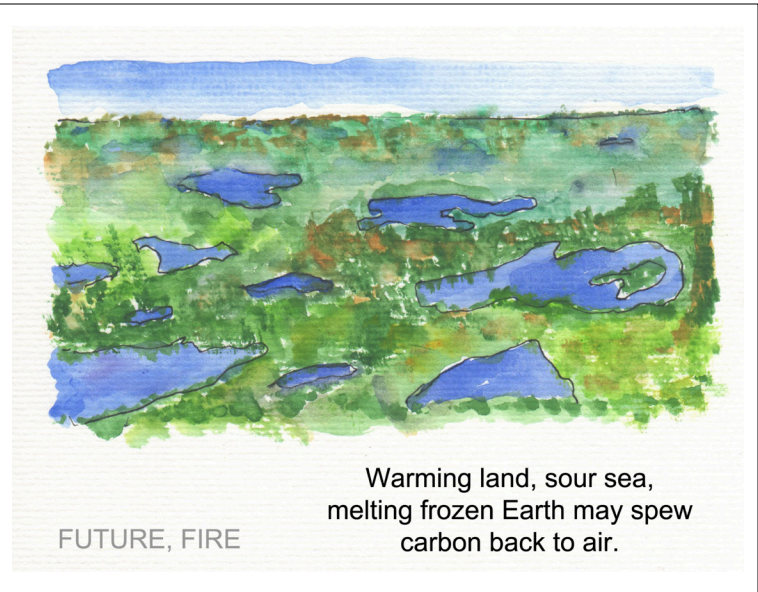
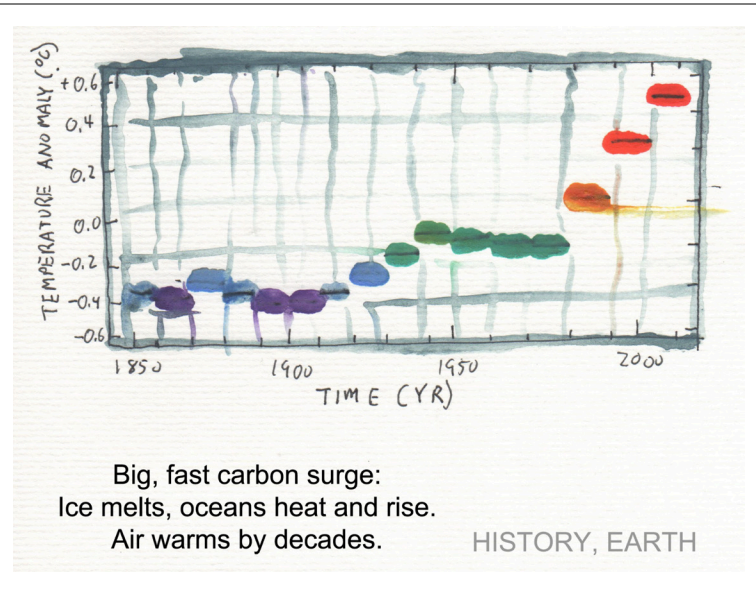


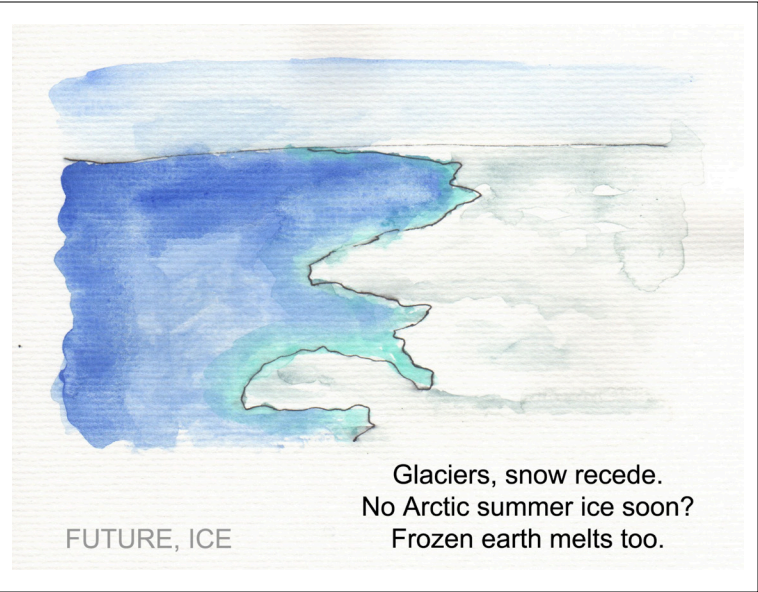
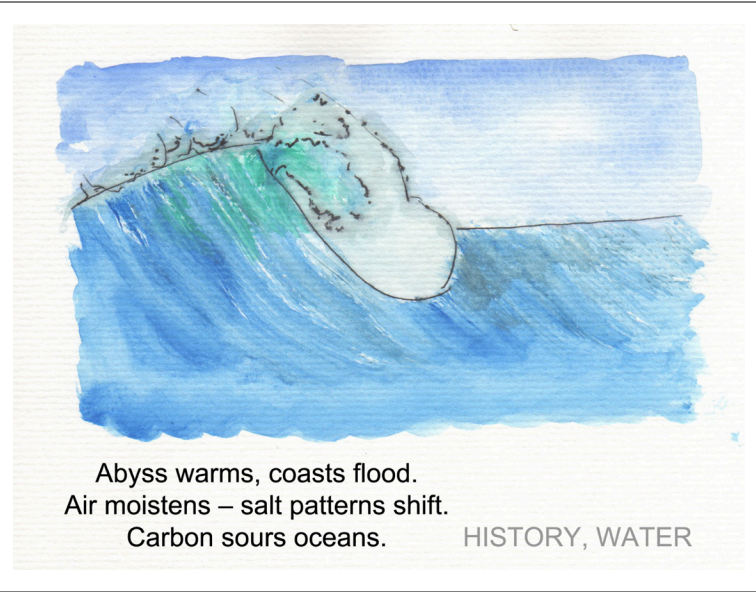
1. Print double-sided in color with long edge binding.

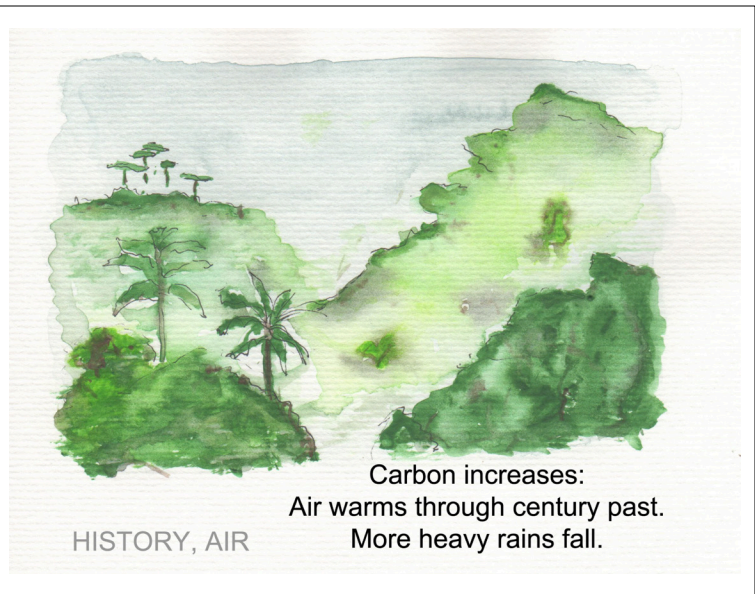
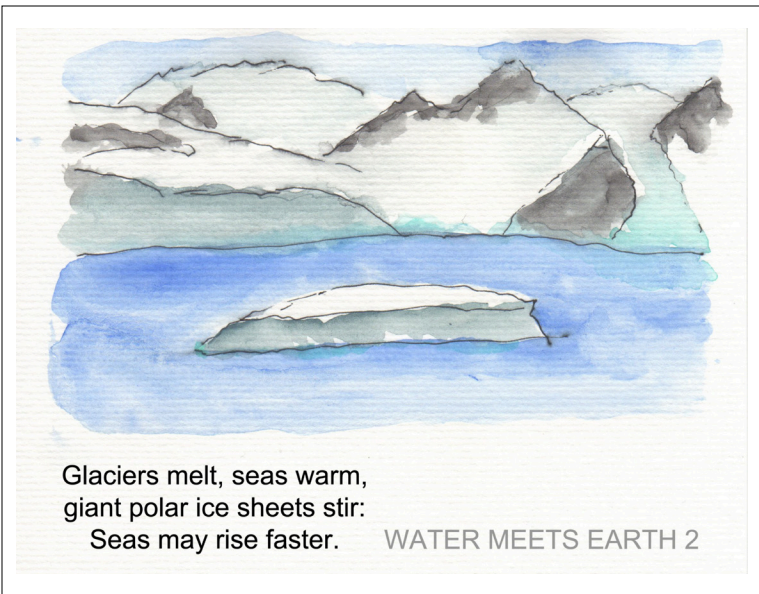
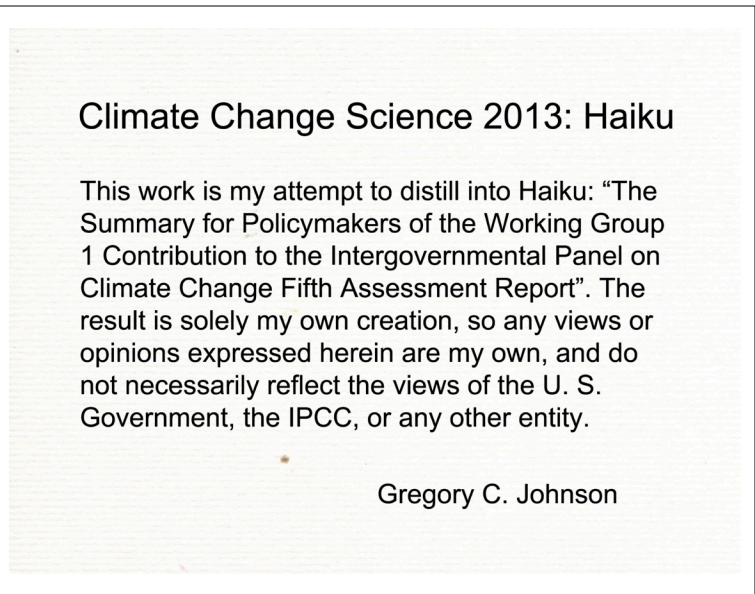
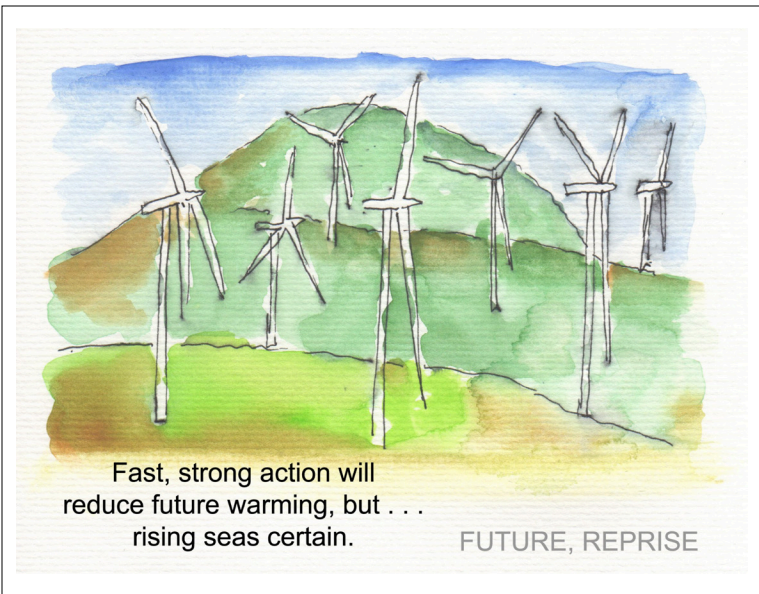
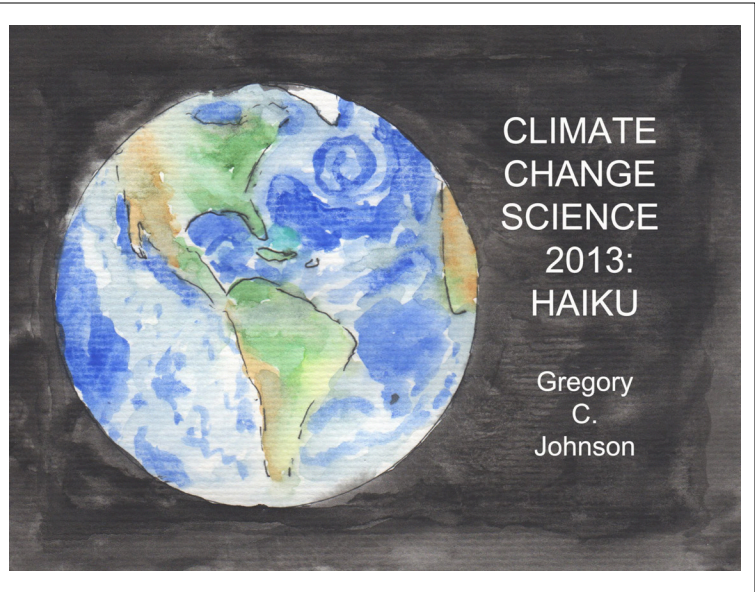


2. Cut along along bottom horizontal lines just below each pair of pictures.

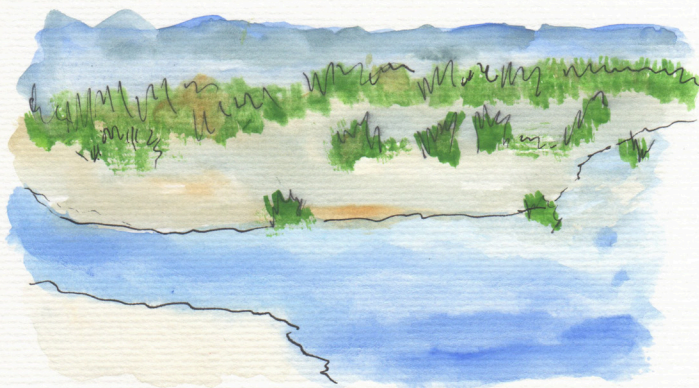


3. Orient the 6 strips so instructions 1-6 are on their top sides, facing up.





4. Stack the 6 strips in order with 1 on the bottom, and 6 on the top.



Seas rise as they warm.
Rates quicken last century.
Melting ice joins in.

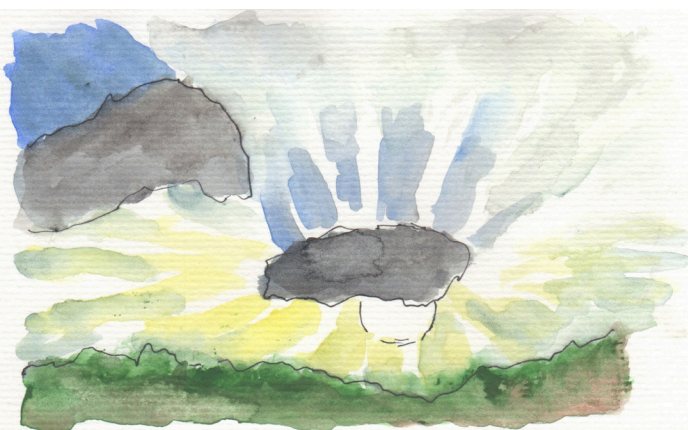
WATER MEETS EARTH



Wet will get wetter
and dry drier, since warm air . . .
carries more water.

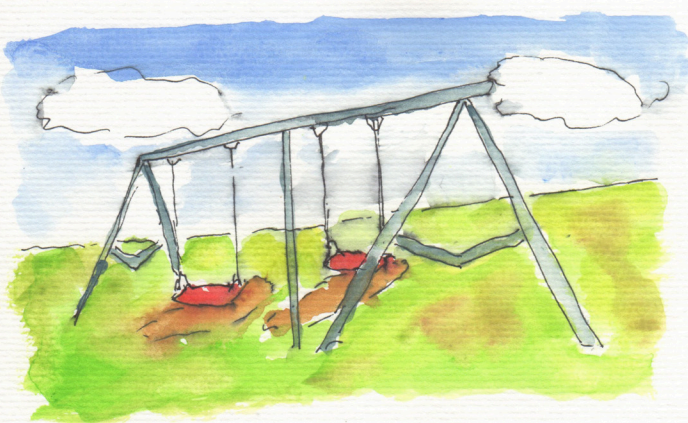
WATER MEETS AIR

5. Staple strips together with 2 vertical staples between center vertical lines.



CO₂, methane
warm despite sun-spots, dust, soot,
clouds, and volcanoes.

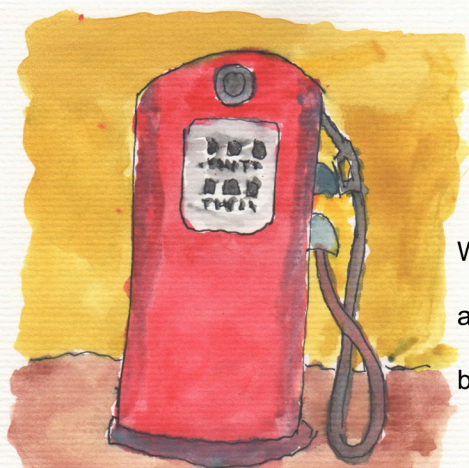
CHANGE DRIVERS



Forty years from now
children will live in a world
shaped by our choices.

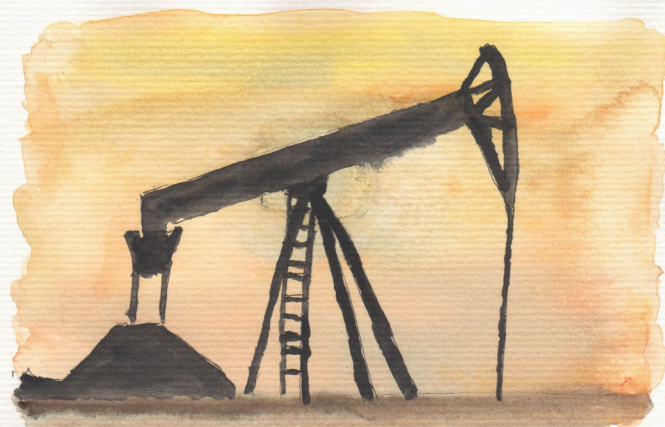
THE FUTURE

6. Trim resulting booklet at top horizontal and outside vertical lines.



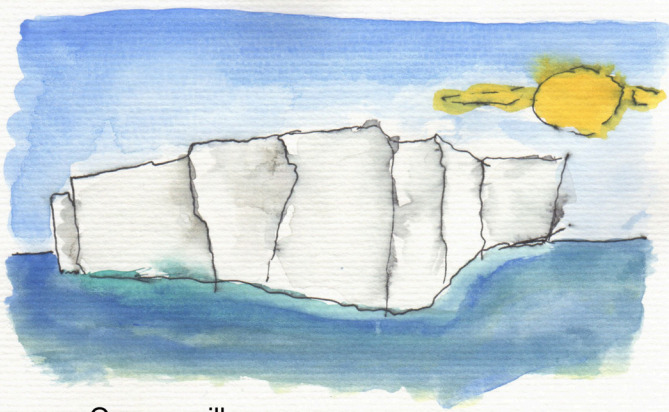
We burn
more carbon
air warms
for decades –
but seas . . .
for millennia.

RESPONSE

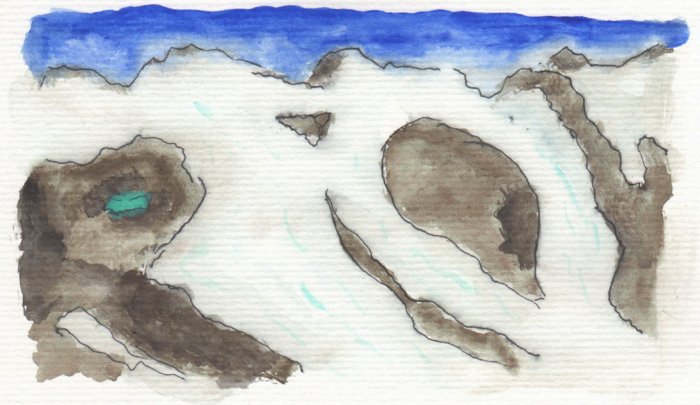


Our industry has
warmed oceans, air, lands – changed rains –
melted ice – raised seas.

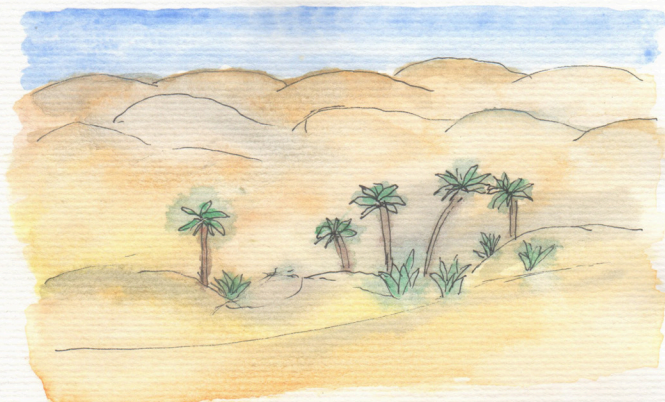
ATTRIBUTION



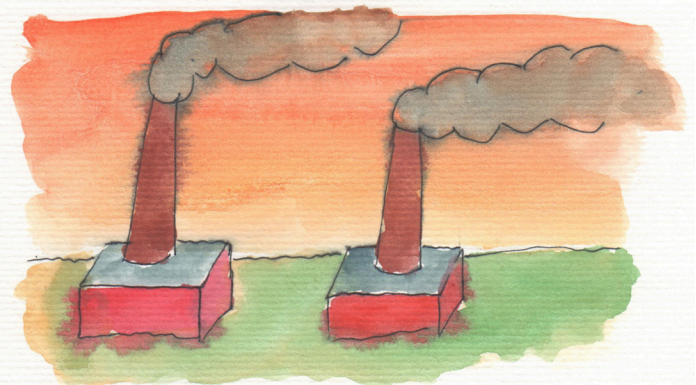
Oceans will warm, yes,
deep and wide, changing currents
that flow 'round the world. FUTURE, WATER



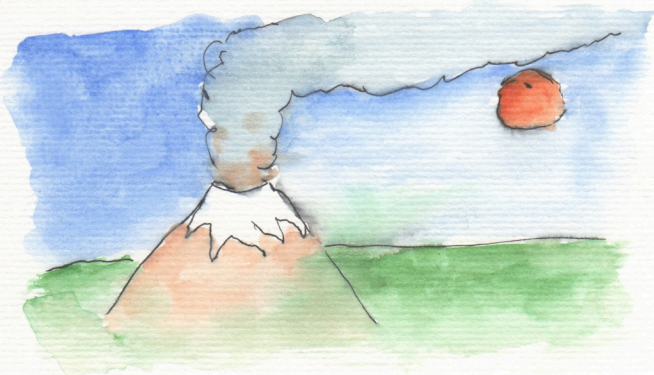
Glaciers and ice sheets
melt worldwide, speed increasing.
Sea ice, snow retreat. HISTORY, ICE



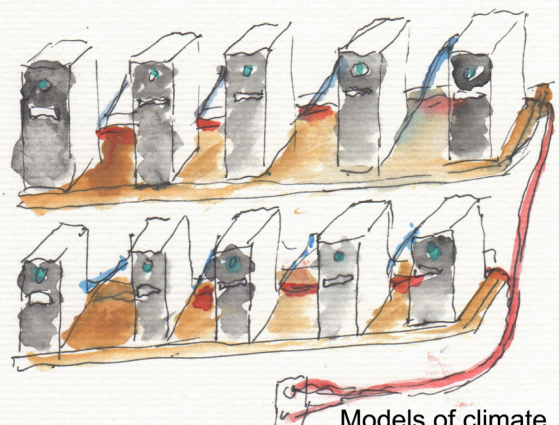
Arctic will warm most
and land more than sea - too hot.
Still, choices matter. FUTURE, AIR



Burning fuel, farming
trap heat and sour the oceans
beyond human ken. HISTORY, FIRE



Recent air warming
slowed by volcanoes and sun?
Seas sequester heat. A PAUSE



Models of climate
improve with time and details . . .
capture big patterns. MODELS