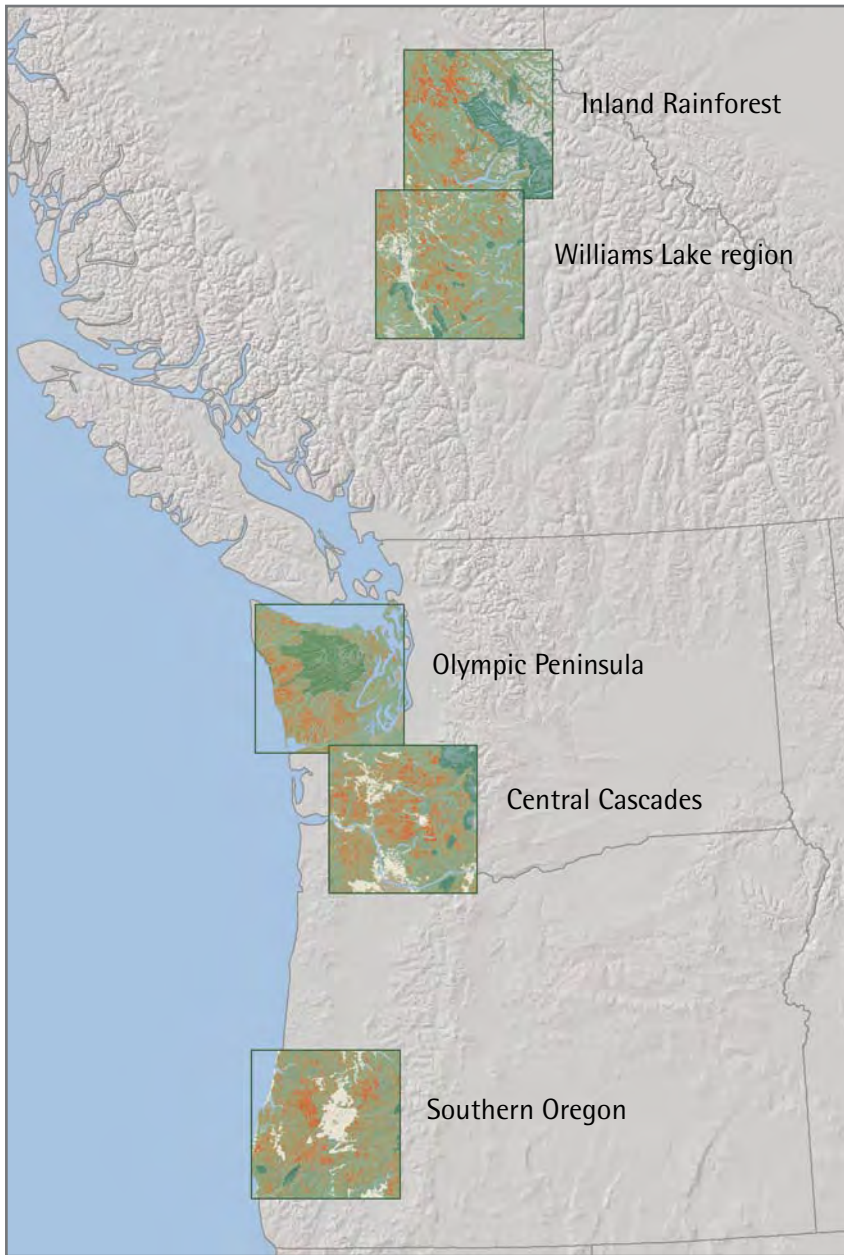


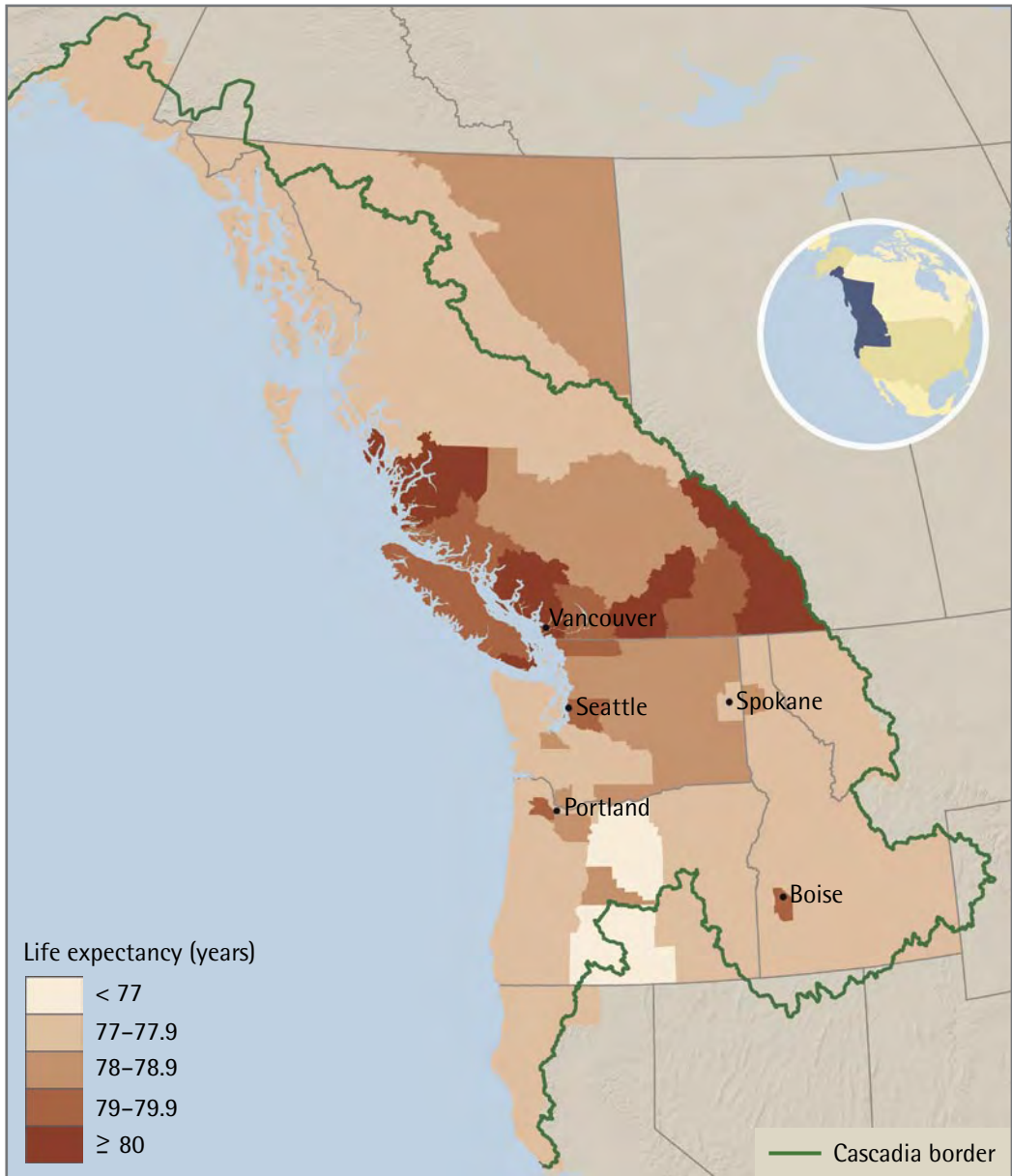
THE CASCADIA SCORECARD'S FOREST STUDY AREAS



The five areas monitored by the Scorecard encompass about 15 percent of Cascadia's forests.⁴⁴ Map by CommEn Space.

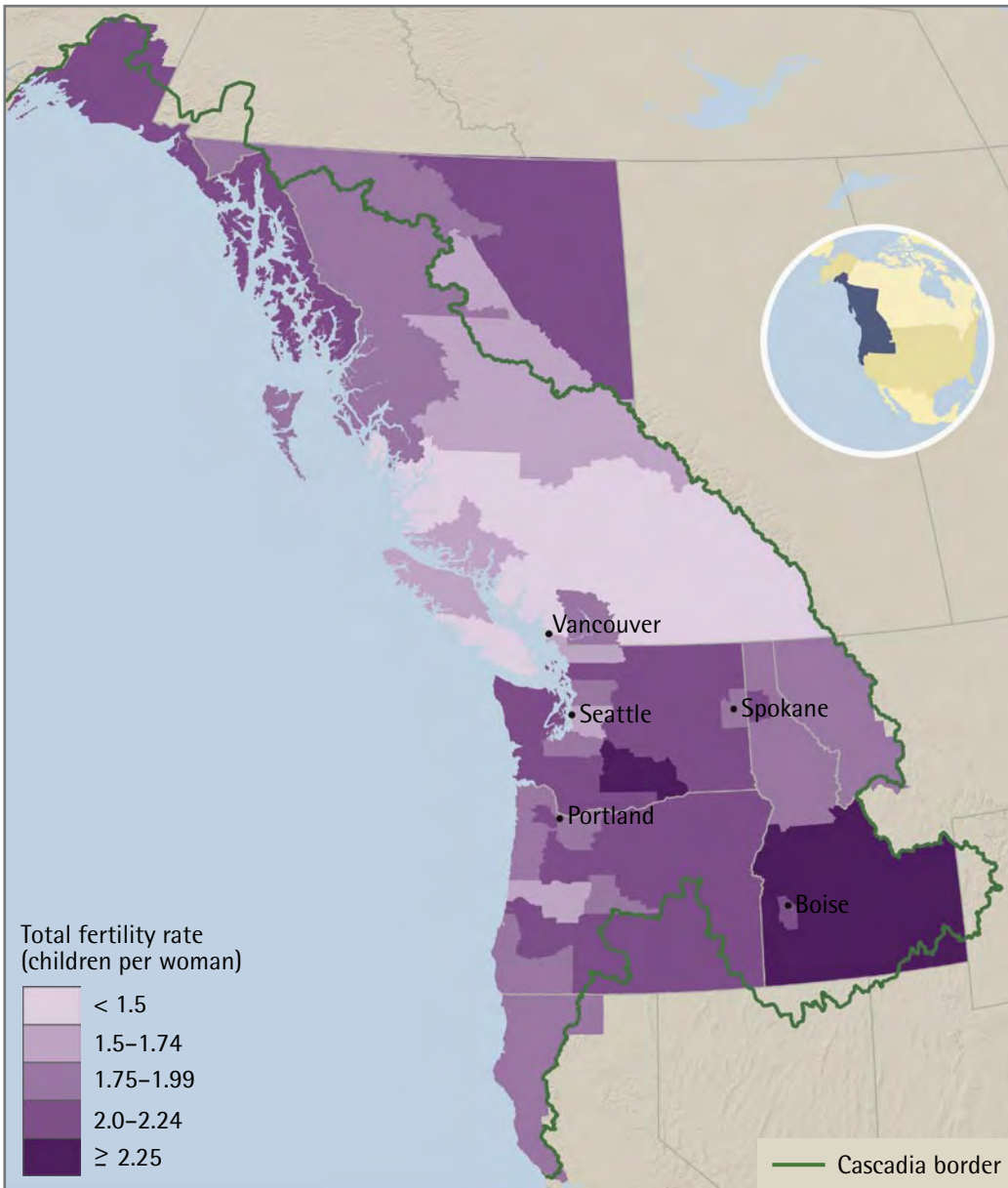
See all Scorecard maps and animated versions at www.northwestwatch.org.

LIFE EXPECTANCY IN CASCADIA



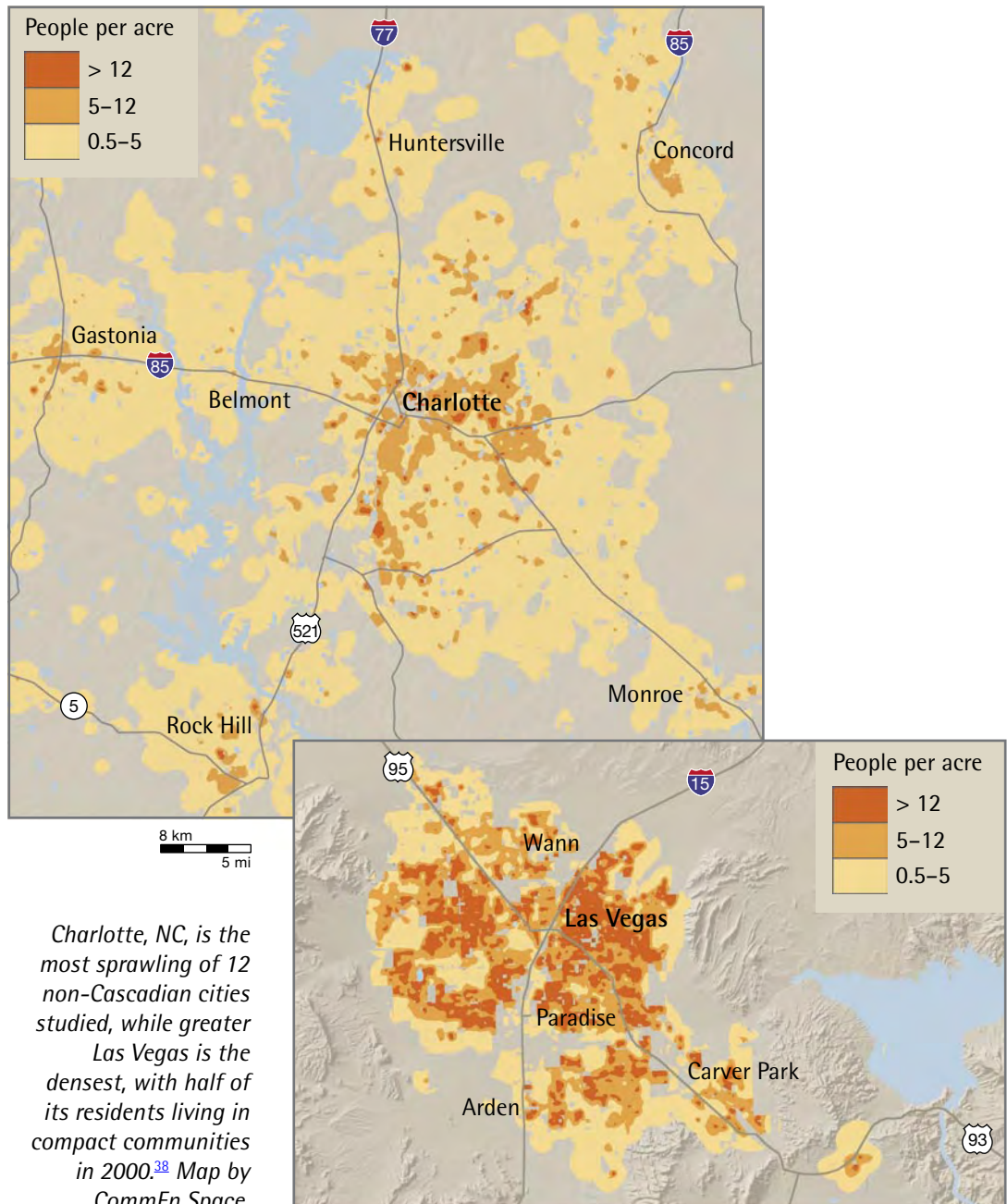
On average, residents of British Columbia live about two years longer than residents of the Northwest states.¹⁶ Map by CommEn Space.

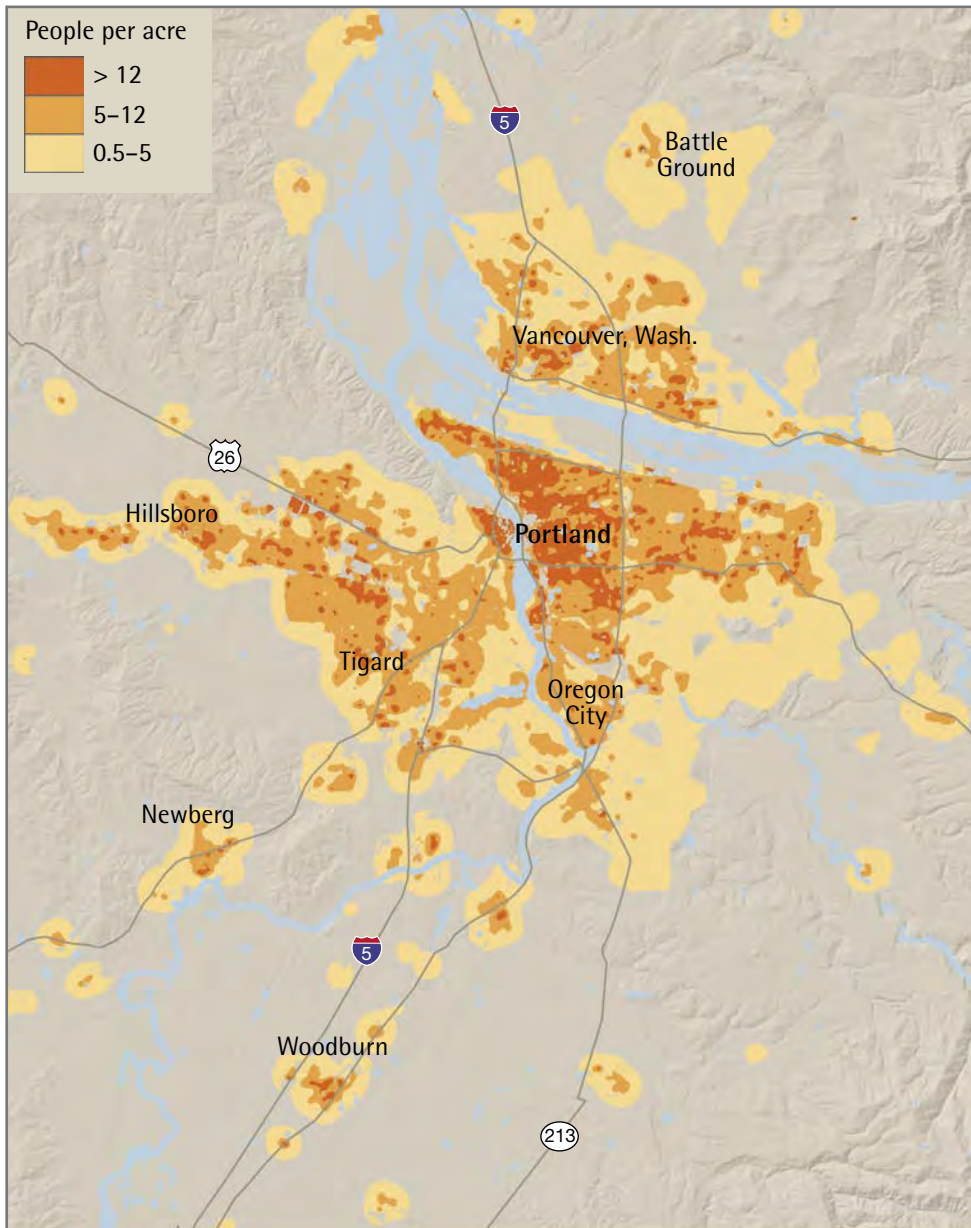
AVERAGE FAMILY SIZE ACROSS THE NORTHWEST



Southern Idaho has Cascadia's largest average family size.²⁸
Map by CommEn Space.

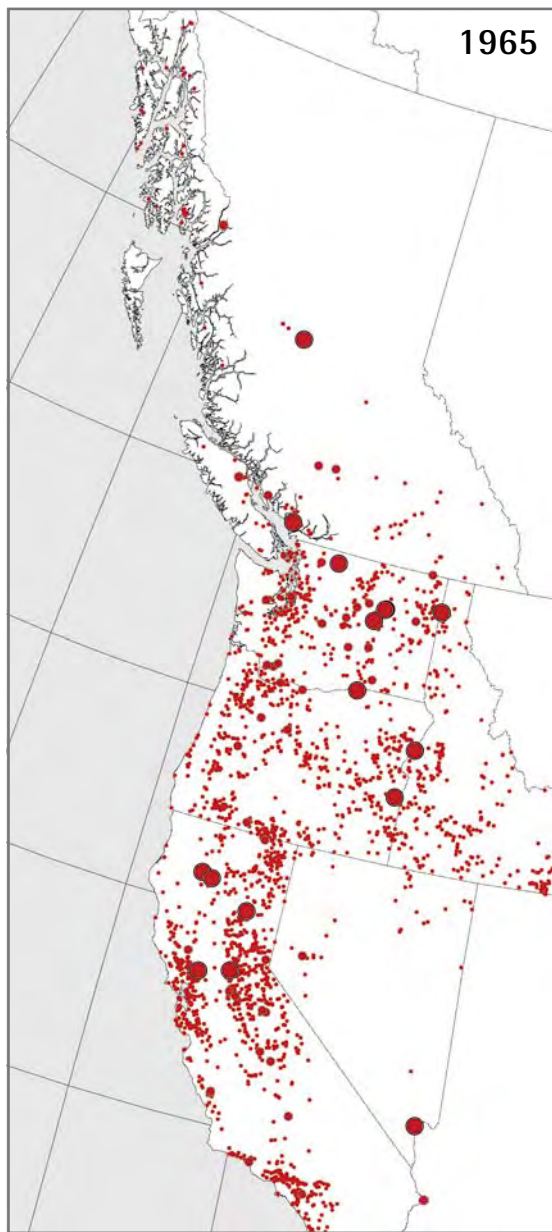
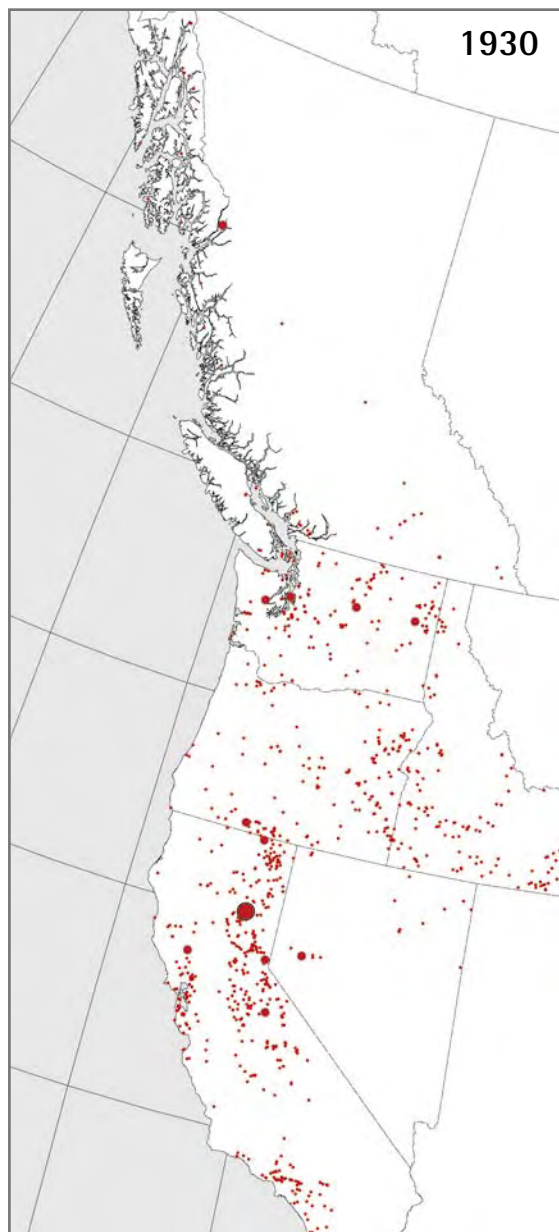
POPULATION DENSITY IN CHARLOTTE, NC, AND LAS VEGAS, NV, 2000

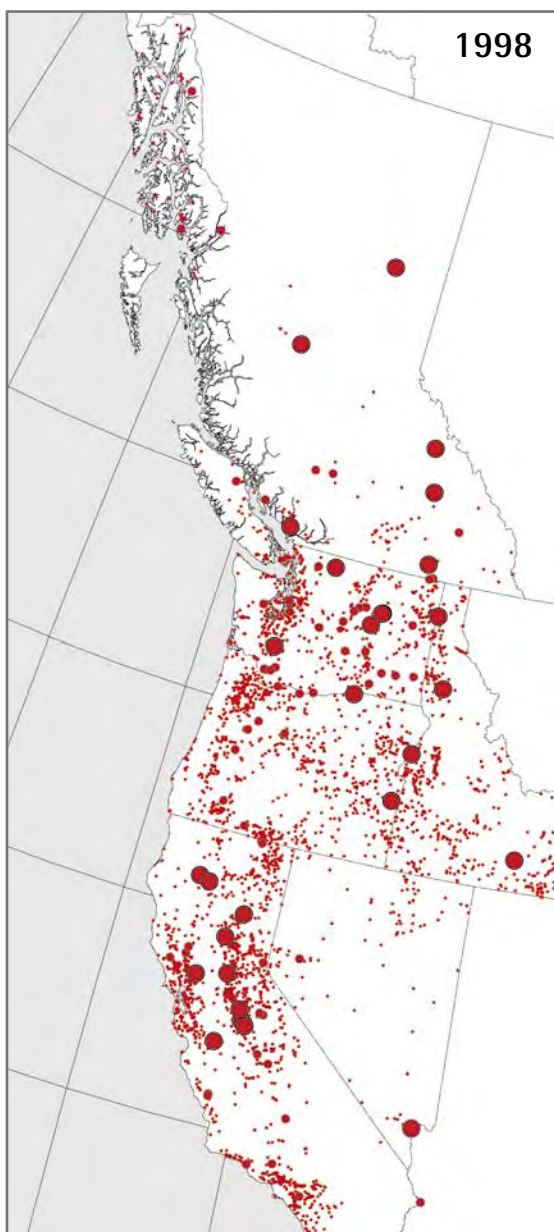




Though Portland, OR, isn't as compact as arid Las Vegas, it has excelled in recent years at protecting rural land from suburban development.³⁸ Map by CommEn Space.

THE PROLIFERATION OF DAMS IN CASCADIA, 1930-98





Over the past 70 years, the Northwest's power infrastructure has decimated wild salmon runs by blocking the region's rivers with dams.¹¹⁷ Maps reprinted by permission of Ecotrust. www.ecotrust.org

OIL PIPELINES IN CASCADIA



Cascadia's transportation system is reliant on a small number of oil pipelines.⁸⁰ Map by CommEn Space.

NATURAL GAS PIPELINES IN CASCADIA



The Northwest's natural gas comes across the Canadian Rockies through two pipelines, and from Wyoming and other Rocky Mountain states via a third.⁸⁰ Map by CommEn Space.

TRANSMISSION LINES IN CASCADIA



The region's power network is more secure than the oil and gas pipeline infrastructure, but it is less stable—a massive, interconnected balancing act.⁸⁰ Map by CommEn Space.